

# Cynomolgus CTLA-4/CD152 Protein

Cat. No. CTL-CM141



## Description

|                         |  |
|-------------------------|--|
| <b>Source</b>           | Recombinant Cynomolgus CTLA-4/CD152 Protein is expressed from HEK293 with His tag at the C-Terminus. It contains Ala37-Ser160.     |
| <b>Accession</b>        | G7PL88-1   |
| <b>Molecular Weight</b> | The protein has a predicted MW of 14.4 kDa. Due to glycosylation, the protein migrates to 25-30 kDa based on Bis-Tris PAGE result. |
| <b>Endotoxin</b>        | Less than 1EU per µg by the LAL method.  |
| <b>Purity</b>           | > 95% as determined by Bis-Tris PAGE<br>> 95% as determined by HPLC  |

## Formulation and Storage

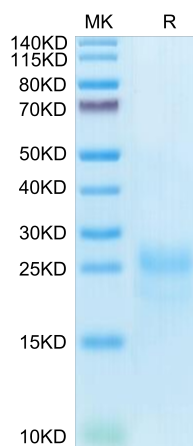
|                       |   |
|-----------------------|---|
| <b>Formulation</b>    | Lyophilized from 0.22µm filtered solution in PBS (pH 7.4). Normally 8% trehalose is added as protectant before lyophilization.  |
| <b>Reconstitution</b> | Centrifuge the tube before opening. Reconstituting to a concentration more than 100 µg/ml is recommended. Dissolve the lyophilized protein in distilled water.  |
| <b>Storage</b>        | -20 to -80°C for 12 months as supplied from date of receipt. -80°C for 3 months after reconstitution. Recommend to aliquot the protein into smaller quantities for optimal storage. Please minimize freeze-thaw cycles. |

## Background

CTLA-4 (cytotoxic T-lymphocyte-associated protein 4), also known as CD152, is a protein receptor that, functioning as an immune checkpoint, downregulates immune responses. CTLA4 is constitutively expressed in regulatory T cells but only upregulated in conventional T cells after activation – a phenomenon which is particularly notable in cancers. It acts as an "off" switch when bound to CD80 or CD86 on the surface of antigen-presenting cells.

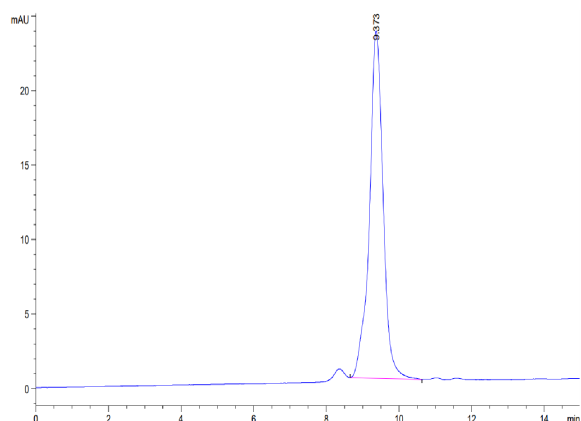
## Assay Data

### Bis-Tris PAGE



Cynomolgus CTLA-4 on Bis-Tris PAGE under reduced condition. The purity is greater than 95%.

### SEC-HPLC



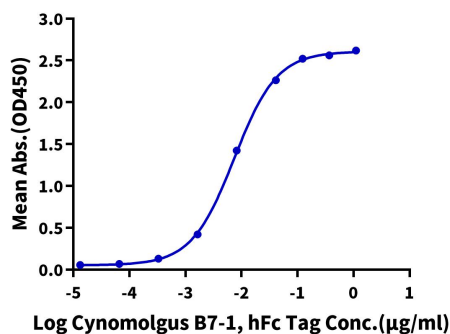
The purity of Cynomolgus CTLA-4 is greater than 95% as determined by SEC-HPLC.

Assay Data

ELISA Data

**Cynomolgus CTLA-4, His Tag ELISA**

0.1µg Cynomolgus CTLA-4, His Tag Per Well

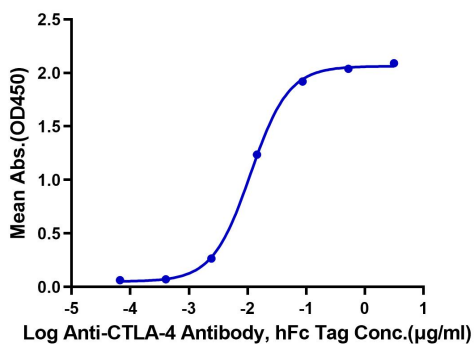


Immobilized Cynomolgus CTLA-4, His Tag at 1µg/ml (100µl/well) on the plate. Dose response curve for Cynomolgus B7-1, hFc Tag with the EC50 of 7.4ng/ml determined by ELISA (QC Test).

ELISA Data

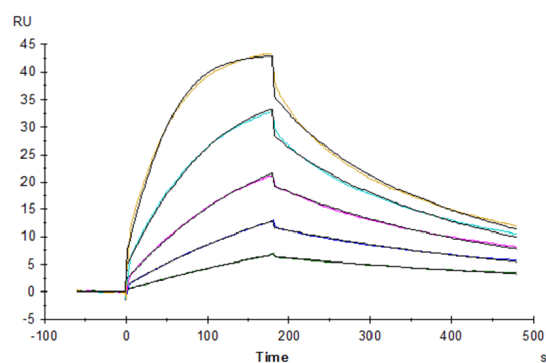
**Cynomolgus CTLA-4, His Tag ELISA**

0.1µg Cynomolgus CTLA-4, His Tag Per Well



Immobilized Cynomolgus CTLA-4, His Tag at 1µg/ml (100µl/well) on the plate. Dose response curve for Anti-CTLA-4 Antibody, hFc Tag with the EC50 of 11.2ng/ml determined by ELISA.

SPR Data



Cynomolgus B7-1, His Tag immobilized on CM5 Chip can bind Cynomolgus CTLA-4, His Tag with an affinity constant of 9.90 nM as determined in SPR assay (Biacore T200).